



CENTRAL LINN EDUCATION NEWS! Individualized Education for All Learners

Volume 3, Issue 1

October 2014

Central Linn Community Survey

The Central Linn School Board is asking for your input. Please fill out the following survey and detach it from the newsletter, fold it in half and return it to the Central Linn School District. Either by mail (please remember the stamp) or by dropping it off at one of the following locations: The Elementary School, the High School, the District Office, Brownsville City Hall, Halsey City Hall, or at the Shedd Market. **Please return by October 24th!**

1. What is your age?
 - 18-29
 - 30-39
 - 40-49
 - 50-64
 - 65 and over
2. Where do you live?
 - Brownsville
 - Halsey
 - Peoria
 - Shedd
 - Other
3. How long have you lived in the school district?
 - Less than one year
 - 1-5 years
 - 6-10 years
 - 11-20 years
 - More than 20 years
4. Do you usually vote in elections?
 - Yes
 - No
5. Are you an employee of the school district?
 - Yes
 - No
6. How many times have you visited one of the school buildings in the last year?
 - 0 times
 - 1-2 times
 - 3-4 times
 - 5+ times
7. Do you have school age children or younger?
 - Yes
 - No
8. Do you attend Central Linn events? (sports, concerts, plays, etc.)
 - Yes
 - No
- 8a. Why or why not? _____
9. How do you currently receive information regarding school district matters? Check all that apply.

<input type="checkbox"/> School District Newsletter	<input type="checkbox"/> Other School District Staff	<input type="checkbox"/> School Administration
<input type="checkbox"/> Teachers	<input type="checkbox"/> The Times – Brownsville	<input type="checkbox"/> School Board Meetings
<input type="checkbox"/> Friends or Neighbors	<input type="checkbox"/> District Website	<input type="checkbox"/> Attend Meetings at Schools
<input type="checkbox"/> From My Children	<input type="checkbox"/> PTA/Boosters	<input type="checkbox"/> Facebook Other _____
10. How would you prefer the school district and the school board keep you informed? _____
11. What is Central Linn School District currently doing that you feel has made a positive impact in the areas of education and/or community relations _____
12. What would you like to see happening at our schools that is currently not happening? _____

13. When you think of Central Linn Schools, what do you think? Are you happy with the students who are attending or graduate from the school? Is the high school producing the quality of students that you can be proud of as a community member? _____

14. What could you offer to do as a patron of the school district that would help build and improve our school district? _____

15. How would you prefer to complete future surveys? _____



Deadline for survey is Friday, October 24th—Thank you!

Place
Stamp
Here

**Central Linn School District
331 E Blakely Avenue
Brownsville, Oregon 97327**

Fold Here

Messages from the Board Members to the Community



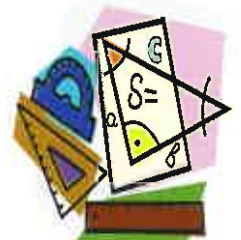
Good Morning Central Linn: Here we are once again at the beginning of a school year. Muffled voices coming from under blankets " I'm up, I'm up". "What's for breakfast?" " I'm not late I have plenty of time."

With the changes that have been made I urge you all to be patient. Our goal on the school board is for each child to receive the best. Simply the best. This will happen and is happening now. Each child will progress at the rate where they are the most successful. That is the most important goal, your children's success.

Chris Wyne — Zone 7

We are in an exciting climate at Central Linn. There are many changes taking place and new plans being developed to improve our students learning experience and access to opportunities. I feel very good about where we are headed with regards to student achievement and our grading system. Students are better tracked with our new grading and assessment program which will result in individualized opportunity for all. I witnessed an example of this at the recent Math Lab informational meeting. Several concerned parents were able to speak directly with two of the High School and Middle School math instructors to work out different problems that they had with math curriculum, grading and student achievement. The instructors had plans and/or solutions that would tailor to each concern. Good Job!

Another area of excitement is around our facilities and campuses. The district office staff will be moving to the High School campus in the near future. This approach to constant communication is long overdue. Finally, there is continued research by committee to explore the best options for addressing our school buildings and facilities. This is and should be a community-wide effort to ensure that education has a future in Central Linn. I believe that through these efforts a solution to our facilities problems will be found. I am proud to be part of Central Linn.



David Goracke - Zone 1

Place tape here



I would like to write a note directed to the Communities of Brownsville, Halsey, and Shedd to thank those of you who attended the meetings that took place last spring. The topic of these meetings was around the conditions of our aging schools and if the district should replace, fix, and maintain our existing schools or look at building new schools or the combination of the two.

Several community members may have thought the meetings did not go so well; I just did not see it that way. There was a little unneeded name calling, a few fingers were pointed and even some yelling; believe it or not, some positive things came out of this. I believe that these meetings helped in providing the ground work for great things to come. (I would much rather have loud discussions than no discussion at all.)

I personally took away three things from those meetings:

1. The community thought that a decision by the Board had already been made on building new schools. Wrong, we just brought ideas and shared information that we had learned from the Facilities Committee.
2. The community wants the district to start maintaining and taking care of what we currently have. For this school year the school district moved some staff around so that we can have a Maintenance Director and the Facility Committee is trying to put together a Facilities Advisory Group, made up of interested community members.
3. The community wants better communication from the School Board. The Board of Directors has put together a survey with the assistance of the Superintendent and support staff.

It will be extremely important for community members to fill out the enclosed survey; The Central Linn School Board of Directors wants to know; needs to know, your opinion on some specific topics. How you answer the questions will assist us in continuing to provide a safe and healthy environment for our children to learn.

Let us work together in building a partnership that can do great things for our students, after all these students are our community's future.

DeeDee Thomas—Zone 6



This is my third year on the Central Linn School Board. In those three years I have seen positive changes, with several hurdles. We inherited issues from the past administration that needed to be corrected. Some of these issues included our education platform, financial standing, policies, and staffing. In my opinion, our biggest hurdle was turning around our academic program, and thanks to many teachers and staff we have started (the test scores are showing it).

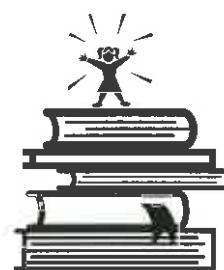


I would like to see more community members attend school board meetings. I believe our district should be transparent, but I recognize there is room for improvement in this area. If more community members attended Board meetings, it would be an opportunity for questions and first hand information regarding changes or improvements to the district.



My *ultimate* goal as a Central Linn School Board Member is that every student graduate from our district with an education that has prepared him or her for any four-year state university they would like to attend. I realize that not every student may be able to achieve that goal, but I want to know that they have been given instruction and offered an education to the best of our ability.

Charley Wolff – Zone 3



NONPROFIT ORG.

U.S. POSTAGE

PAID

BROWNSVILLE, OR

PERMIT NO. 4

Local
Postal Customer

In This Issue

- Community Survey
- Letters from the School Board

Upcoming Events

Oct		
School Board Meeting	13	
@CLEES 6:30pm		
Parent/Teacher Conferences		
Evening	23	
All day	24	
Deadline for Survey	24	
Fall Festival	31	
@CLEES 11am		
Nov		
School Board Meeting	10	
Veteran's Day /No School	11	
Regular School Day	14	
Thanksgiving /No School	20	

www.centrallinn.k12.or.us

Messages from the Board Members to the Community



The Central Linn School District is changing. Why is the district making these changes? How will these changes affect my family? How will they affect this community? Are the changes being made good or bad? Do I have a say in these changes? How do I find more information about these changes? These and other questions are all good questions. Can they be answered in the small amount of space available on this mailer? No.

The changes you are seeing are the response by the school board and superintendent to requirements placed upon the district. Community input, new federal and state laws and mandates, different interpretations of old laws, new codes, and costs are a few of the reasons these changes are happening.

I encourage you to become more involved and informed. How, or how much, you are involved is up to you. By returning the survey you are involved. Attend the community school meetings; check out the school websites; come to a school board meeting; go to a school or rec center athletic event; attend a school concert; meet with your state and federal representatives when they are in town; volunteer with S.M.A.R.T.; read the Brownsville Times; talk to a school board member or just talk to your neighbor. The school board welcomes your input.

George Frasier— Zone 2

